

# Hand Truck Components

All Magliner hand trucks have a 500 pound capacity unless otherwise stated.

## Frames



**1**

**Part #300001**

Straight back frame to provide structure and support to the hand truck.



**2 or B**

**Call your dealer**

Straight lattice back for general use and transporting smaller packages. (B front-mount strap; 2 back-mount strap).



**3**

**Part #300003**

Curved lattice back frame for carrying round or flat loads.



**4**

**Part #300010**

Straight back\* frame with molded cross members.



**5**

**Part #300021**

Curved back\* frame with molded cross members for transporting barrels and kegs.



**6**

**Part #300032**

Two straight and one (bottom) curved back\* molded frame. Ideal for transporting cases on top of kegs.

\* Bolted frame

## Stress-Resistant Frames



**C**

**Part #302653**

Straight back.

*Heavy-duty frames with wider cross members for maximum shock absorption and durability*



**D**

**Part #302660**

Straight lattice back for transporting smaller packages. **302657** for use with flush mount noses.

## Horizontal Loop Handles



**11**

**Part #301000**

Popular "U" loop handle is ergonomically designed to provide comfort to the wrist and easy operation of the hand truck.



**12**

**Part #30100**

Basic loop handle with "U" brace for extra load support.



**18**

**Part #301005**

Slightly angled "U" loop handle (3" higher than #11 handle).



**19**

**Part #301008**

"U" loop handle with vinyl sleeve for a comfortable grip and reduced user fatigue.

## Vertical Loop Handles



**15A**

**Part #300981**

**300990 for #5 frame**  
52" Vertical loop handle for use with 1, 2, 4, 6, B and C frames.



**15C**

**Part #300978**

**300977 for #5 frame**  
60" Vertical loop handle for use with 1, 2, 4, 6, B and C frames.



**60**

**Part #300994**

Vertical loop for Hi-U extension for use with 1, 2, 4, 6, B and C frames. **300995** for #5 frame. (Hi-U available in 55", 60" and 68" heights)



**22**

**Part #30102**

"U" handle with vinyl sleeve and "U" brace for higher loads.



**24**

**Part #301001**

Loop handle with straight top surface.

## Double Loop Handles



**25A**

**Part #301129**

52" double vertical loop provides the operator a comfortable grip in various positions.



**25B**

**Part #301115**

55" double vertical loop provides the operator a comfortable grip in various positions.



**25C**

**Part #301119**

60" double vertical loop provides the operator a comfortable grip in various positions.



**35B**

**Part #302297**

55" bolted dual grip increases control and offers multiple hand positions.



**35D**

**Part #302298**

62" bolted dual grip increases control and offers multiple hand positions.



**36**

**Part #301170**

Bolted dual grip handle with vertical post is 62" high and aids in the movement of tall loads.

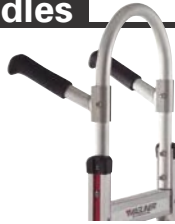
## Double Grip Handles



**16**

**Part #86031**

Standard double pistol grip handle. Handles are curved out for operator comfort and two-handed control.



**30**

**Part #301137**

52" welded double grip handle is angled out to meet the operator's hands.

## Single Grip Handles



**13A**

**Part #301011**

52" straight loop with cross brace and welded pin handle.



**13B**

**Part #301126**

55" straight loop with cross brace and welded pin handle.



**13C**

**Part #301127**

60" straight loop with cross brace and welded pin handle.



**17**

**Part #301004**

52" straight loop handle with welded pistol grip on top for easier leverage.

## Noses



**AM**

**Part #300200**

Die-cast magnesium with recessed heel is 14" wide x 7-1/2" deep.



**HM**

**Part #300197**

Die-cast magnesium with recessed heel is 14" wide, 12" deep.



**UM**

**Part #300201**

Die-cast magnesium with recessed heel is 18" wide, 7-1/2" deep.



**E1**

**Part #300244**

Extruded aluminum 14" wide available with recessed heel 7-1/2" deep or flush mount 9" deep.



**E2**

**Part #300254**

Extruded aluminum 14" wide x 9" deep (flush mount only).



**G1**

**Part #300245**

Extruded aluminum 18" wide available with recessed heel 7-1/2" deep or flush mount 9" deep.



**G2**

**Part #300248**

Extruded aluminum 18" wide x 9" deep (flush mount only).



**K1**

**Part #300203**

Extruded aluminum 16" wide x 12" deep; 4-1/2" high (flush mount only).



**K2**

**Part #300215**

Extruded aluminum 20" wide x 12" deep; 4-1/2" high (flush mount only).



**E3**

**Part #300544**

High-strength steel 14" wide available with recessed heel 7-1/2" deep or flush mount 9" deep.



**E4**

**Part #300554**

High-strength steel 14" wide x 9" deep (flush mount only).



**G3**

**Part #300545**

High-strength steel 18" wide available with recessed heel 7-1/2" deep or flush mount 9" deep.



**G4**

**Part #300548**

High-strength steel 18" wide x 9" deep (flush mount only).

*Innovation That Delivers*

# Hand Truck Components

## Wheels



**815**

**Part #10815**

8" mold-on rubber on die-cast magnesium hub with double-groove ball bearings. Hard, puncture-resistant rubber works well on smooth to semi-smooth surfaces.



**825/1025**

**Part #11825/111025**

8" or 10" puncture-resistant, solid, rubber tire on one-piece polyolefin hub with double-groove ball bearings.



**830/1030**

**Part #10830/101030**

Strong, one-piece polyolefin hub with 8" or 10" puncture-resistant, shock-absorbing, non-marking balloon cushion tires and double-groove ball bearings.



**850**

**Part #12850**

8" pneumatic tires with double-groove ball bearings and three-piece hub. Pneumatic wheels work best on uneven and rough surfaces.



**1010**

**Part #131010**

10" puncture-resistant microcellular foam tire with sealed semi-precision ball bearings – never goes flat and performs like a pneumatic tire but doesn't require air!



**1060**

**Part #121060**

4-ply rated, 10" pneumatic tube-type tire with sealed semi-precision bearings and corrosion-resistant hub. Excellent shock absorption.

## Magliner Comparative Wheel Data

This chart is designed to provide hand truck users with information to best match wheel performance with specific application.

	<b>815</b>	<b>825</b>	<b>830</b>	<b>850</b>	<b>1025</b>	<b>1030</b>	<b>1010</b>	<b>1060</b>
<b>Capacity (per wheel)*</b>	250	250	300	330	250	300	250	350
<b>Force to start rolling (lbs.)</b>	14.2	19	11.4	14.4	24	11.5	16.9	12.2
<b>Force to cont. rolling (lbs.)</b>	10.2	17	9.3	11.5	22	9.4	14.3	9.1
<b>Repairable</b>	bearing only	No	No	Yes	No	No	No	Yes
<b>Durability (1 to 10 scale)</b>	8	6	8	8	6	8	8	10
<b>Weight (lbs.)</b>	1.9	3.2	2.6	2.9	5.8	3.5	4.5	4.6
<b>Bearing life vs. industry standard**</b>	2 x longer	2 x longer	2 x longer	2 x longer	2 x longer	2 x longer	3 x longer	5.7 x longer
<b>Overall Performance Rating (1 to 10 scale)</b>	7	6	9	8	6	9	8	10
<b>Recommended Uses</b>	S, G	S, G	S, G, F, <b>D</b>	S, F, R	S, G	S, G, F, <b>D</b>	S, G, F, R, <b>D</b>	S, G, F, R, <b>D</b>

Testing based on Magliner hand truck with a 500 pound load on a smooth surface.

\* Reference only, never exceed rated hand truck capacity.

\*\* Bearing life based on lab testing under accelerated conditions compared to average single-groove bearing.

**S** = smooth/semi smooth surfaces - hard surfaces

**R** = rough, uneven surfaces - dirt, sand, gravel

**G** = general purpose

**D** = route delivery

**F** = delicate floor protection, tile, carpet

# Hand Truck Accessories

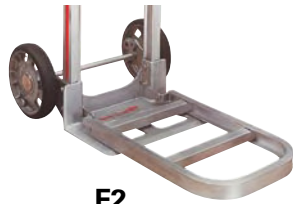
## Folding Noses 300 Pound Capacity



**F1**

**Part #301019**

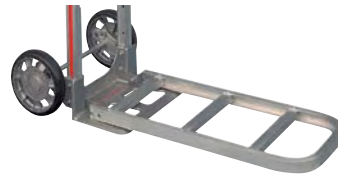
24" length x 12" wide low-profile formed plate extension.



**F2**

**Part #301025**

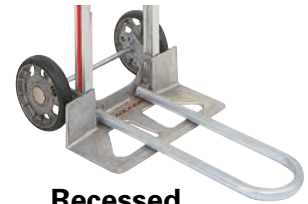
20" length x 12" wide extruded aluminum channel extension.



**F3**

**Part #301026**

30" length x 12" wide extruded aluminum channel extension.



**Recessed Folding Nose**

**Part #302480**

22" long x 9" wide tubular aluminum. Requires special frame, call your dealer.

## Accessory Bags



**Part #302680**

- Overall: 13" long x 8" wide
- Main pocket 12" long x 8" wide x 2" deep with 1 Velcro strap
- Outside pocket 5-1/4" long x 5-1/2" wide
- **Perfect for hand-held parcel computers**



**Part #302681**

- Overall: 16-1/2" long x 12" wide
- 2 top pockets, sealed with Velcro 10" long x 6" wide
- 1 tool pocket 12" wide x 3-1/2" deep
- **Great for vending supplies**



**Part #302682**

- Overall: 18" long x 12" wide
- 1 pocket 11" deep x 9" wide
- Holds a 10" high x 20" diameter can
- 1 tool pocket 12" wide x 3-1/2" deep
- **Designed to carry food service splits**



**Part #302683**

- Overall 29" long x 12" wide
- 2 top pockets, sealed with Velcro 10-1/2" long x 6" wide
- 1 tool pocket 12" wide x 3-1/2" deep
- 1 pocket 11-1/2" wide x 12" deep
- **Ideal for tools, cleaning supplies and clip boards**

## Stair Climbers



**C1**

**Part #86027**

Heavy-duty cast magnesium sliders. Great for moving over curbs or stairs.



**C5**

**Part #86006**

Cast magnesium sliders with replaceable low-friction polymer skid bars. Tough and quiet.



**Padded Hi-U Brace Cover**

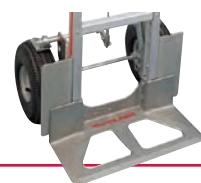
**Part #302497**

Protective nylon-covered foam pad cushions arms and shoulders, reducing injuries.

**Hi-U Frame Extensions**  
52/55/60/62/68

**Call your dealer**

Hi-U frame extensions available in 52", 55", 60", 62", and 68" heights - adds height for taller loads.



**Wheel Guards**

**Part #301114K**

Protect loads from rubbing against hand truck wheels and help keep loads cleaner.

**Sliding Keg Hook**

**Part #32511 4"**

**Part #32513 5"**

Holds keg in place securely then swings out of way when not in use. 4" hook used with a straight side keg and 5" is used with the "barrel-style" keg. For use with 5 frame only.



**Keg Hook**

**Part #301121**

Holds keg in place securely; for use with 5 or 6 frame.



**Folding Nose Plate**



500 pound capacity  
**Call your dealer**

E1 and G1 aluminum extruded noses fold flush with frame when not in use.

*Innovation That Delivers*